

GAS INSERT Fireplace Guide

TRANSFORM YOUR FIREPLACE



HEAT & GLO

Love Your Fireplace Again

You don't need to settle for a cold, empty box. With the right setup, your fireplace can make any space the warmest, coziest, most lived-in part of your home.

A gas insert can bring it back to life with real flames, remote start and no major renovations required. It's an easy update, handled by pros, that will leave you wondering why you didn't do it sooner.



Escape 35" with Firebrick interior panels, Oak logs and New Bronze Halston front

Keep the Coziness, Lose the Hassle

Think of a gas insert as the full upgrade – designed to slide into your existing fireplace and transform it into an efficient, sealed heat source. Gas inserts bring serious ambiance and warmth, with sleek finishes and modern controls.

No matter which solution you choose, it's a win-win-win:

Easy to Use: Light it up in seconds via remote or app. Turn it off just as fast.

Beautiful: Clean lines, gorgeous flames and a look that complements your space.

Safer & Cleaner: No more sparks, soot or smoke. Just clean-burning gas and peace of mind.



NEW! SupremeX



SupremeX 30" with Reflective Black Glass Interior panels, Birch logs and Black Iron Age front

Escape



Escape 35" with Firebrick interior panels, Oak logs and Chateau Forge front

Get more glow with wraparound flames.

Features

- 30" and 35" viewing area
- Up to 32,700 BTUs
- IntelliFire Touch® ignition system makes operation simple, smart and safe (via remote)
- Hand-painted oak or birch logs
- LED ember bed with three brightness levels
- Choose from three front designs and surround sizes
- Built-in fan helps circulate warm air in the room

Options

- IntelliFire® operation via app and voice control
- Interior panels allow you to personalize the look



Product Details

Serious heat meets seamless design.

Features

- 30" or 35" viewing area
- Up to 40,000 BTUs
- IntelliFire Touch ignition system makes operation simple, smart and safe (via remote)
- Hand-painted oak logs
- FireBrick® interior for more heat
- Anti-reflective glass and ClearVue screen for minimum glare
- Choose from five front designs and three surround sizes
- Illuminated ember bed for extra glow
- Built-in fan helps circulate warm air in the room

Options

- IntelliFire operation via app and voice control



Product Details

Supreme



Supreme 25" with Reflective Black Glass interior panels, Birch logs and Gun Metal Firescreen front

Cosmo



Cosmo 30" with Fluted Black Glass interior panels and New Bronze Halston Arch front

Thoughtful design with real performance.

Features

- 25", 30" or 35" viewing area
- Up to 35,000 BTUs
- IntelliFire Touch ignition system makes operation simple, smart and safe (via remote)
- Hand-painted Oak or Birch logs
- Choose from three front designs and surround sizes
- Built-in fan helps circulate warm air in the room

Options

- IntelliFire operation via app and voice control
- Interior panels allow you to personalize the look
- Accent lighting (30" and 35" only)



Product Details

For the modern fireplace makeover.

Features

- 30" or 35" viewing area
- Up to 30,000 BTUs
- IntelliFire Touch ignition system makes operation simple, smart and safe (via remote)
- Black fluted glass interior for a modern look

- Choose from three front designs and surround sizes
- Ember bed crystals: Clear, ebony, amber, cobalt, scarlet or iced fog
- Built-in fan helps circulate warm air in the room

Options

- IntelliFire operation via app and voice control
- Reflective Black glass interior panels
- Hand-painted driftwood logs
- Ceramic river rock stones



Product Details



Provident

Provident 30" with Black Metal Interior panels, Oak logs and Gun Metal Firescreen front

The comfort of fire at its simplest.

Features

- 30" or 35" viewing area
- Up to 32,700 BTUs
- IntelliFire ignition system makes operation smart and safe
- Hand-painted Oak logs
- One front design and choose from three surround sizes

Options

- Remote
- Built-in fan helps circulate warm air in the room
- Stratford Brick interior panels for a traditional look



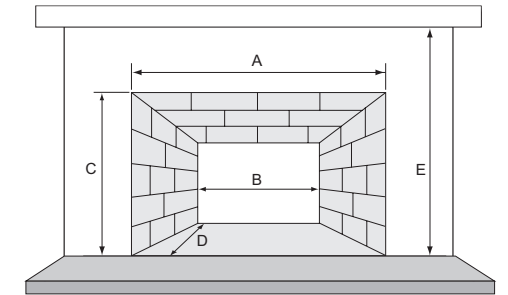
Product Details

Three Easy Steps to Upgrade Your Existing Wood-Burning Fireplace:

STEP 1: MEASURE YOUR EXISTING FIREPLACE AND SELECT YOUR INSERT

The height, width and depth of the existing fireplace opening is needed to ensure selection of an appropriately-sized insert:

- A. Fireplace front width_____
 - B. Fireplace back width_____
 - C. Fireplace front height_____
 - D. Fireplace depth_____
 - E. Hearth to mantel height_____
- If you have a manufactured wood-burning fireplace, measure from the inside of the fireplace opening, not the outside trim.

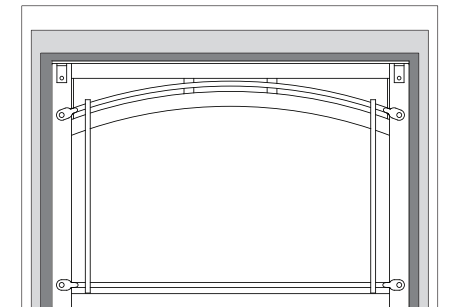


STEP 2: SELECT YOUR FRONT AND SURROUND

Personalize your gas insert with a front and finish that fits your style. Include a surround to fill the gap between the gas insert and existing fireplace opening. Choose from three sizes and three finishes for a unique look.

SURROUND	ESCAPE-35-IFT SUPREME-135-IFT SUPREME-135-BIR COSMO-135-IFT	ESCAPE-30-IFT SUPREMEX-130/BIR SUPREME-130-IFT SUPREME-130-BIR COSMO-130-IFT	SUPREME-125-IFT SUPREME-125-BIR
Small	42" x 29"	40" x 27"	35" x 23"
Medium	44" x 32"	42" x 30"	37" x 26"
Large	48" x 32"	44" x 32"	39" x 28"

- SMALL SURROUND
- MEDIUM SURROUND
- LARGE SURROUND



STEP 3: SELECT YOUR OPTIONS

Choose from our collection of fronts, interior panels and interior media to put the finishing touches on your insert.

Make It Your Own

The beauty of a gas insert is how naturally it fits in. With a thoughtful mix of front and interior designs, plus control options, each insert is made to complement your style and the way you live.



Interior Panels

Interior panels add depth, dimension and personality to your fireplace. This backdrop enhances the flame and transforms the entire look of your insert. Black Glass interior panels are available for optional upgrade on SupremeX, Supreme and Cosmo models.

ESCAPE



FIREBRICK SEAMLESS INTERIOR
(Standard)

SUPREMEX, SUPREME AND PROVIDENT



BLACK METAL
(Standard)



STRATFORD TRADITIONAL BRICK
(Optional upgrade on SupremeX,
Supreme and Provident)



TRANQUIL GREIGE
HERRINGBONE BRICK
(Optional upgrade on SupremeX
and Supreme)



REFLECTIVE BLACK GLASS*
(Optional upgrade on SupremeX
and Supreme)

COSMO



FLUTED BLACK GLASS
(Standard)



REFLECTIVE BLACK GLASS*
(Optional upgrade)

*Shown on front cover.

Logs, Stones and Crystals

Reflect your design style with a wide variety of media options that bring the whole look of the fire together.

SUPREMEX LOG OPTION



NATURAL BIRCH LOGS

SUPREME LOG OPTION



NATURAL BIRCH LOGS

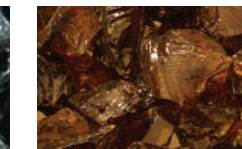
COSMO INTERIOR OPTIONS (Glass media required for installation)



CLEAR GLASS



EBONY GLASS



AMBER GLASS



COBALT GLASS



SCARLET GLASS



ICED FOG GLASS



CERAMIC RIVER ROCK STONES
(Optional upgrade)

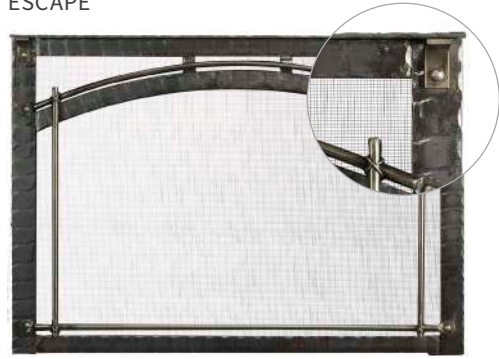


DRIFTWOOD LOGS
(Optional upgrade)

Fronts

Add a finishing touch to enhance your gas fireplace insert. A front frames the fireplace opening and is available in a variety of finishes.

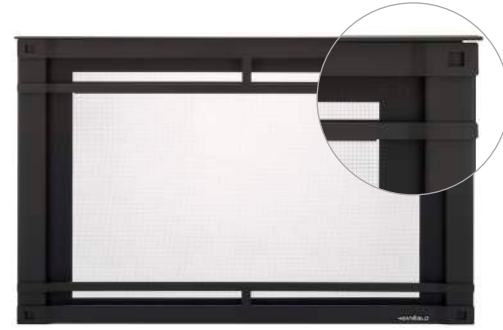
ESCAPE



CHATEAU FORGE
Available in hand-crafted Hammered Steel.

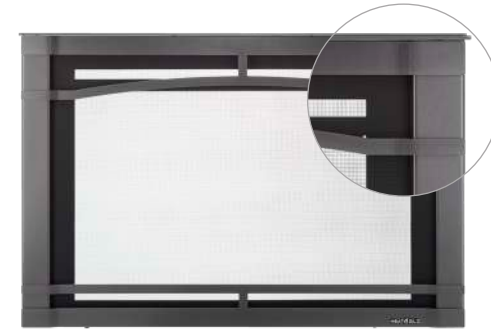


GALLERIA
Available in Black, New Bronze or Gun Metal.



HALSTON
Available in Black, New Bronze or Gun Metal.

SUPREMEX AND SUPREME



HALSTON ARCH
Available in Black, New Bronze or Gun Metal.



IRON AGE
Available in Black, New Bronze or Gun Metal.



FIRESCREEN
Available in Black, New Bronze or Gun Metal.

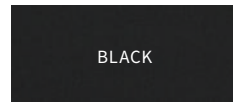


IRON AGE
Available in Black, New Bronze or Gun Metal.

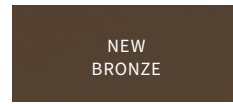


FIRESCREEN
Available in Black, New Bronze or Gun Metal.

FRONT COLOR OPTIONS



BLACK



NEW BRONZE

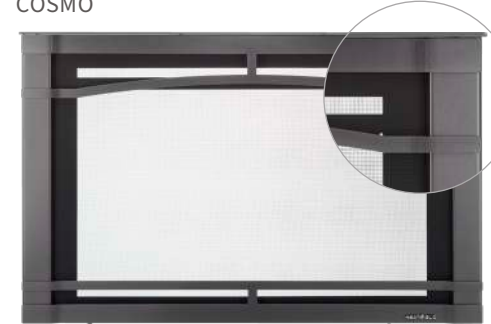


GUN METAL

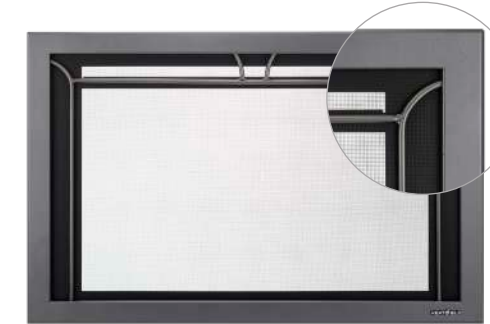


HAMMERED STEEL

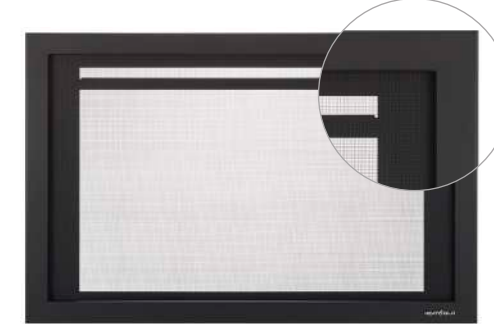
COSMO



HALSTON ARCH
Available in Black, New Bronze or Gun Metal.

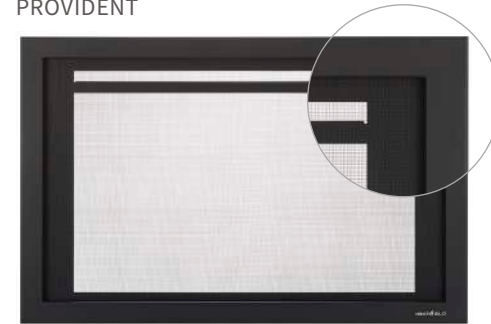


IRON AGE
Available in Black, New Bronze or Gun Metal.

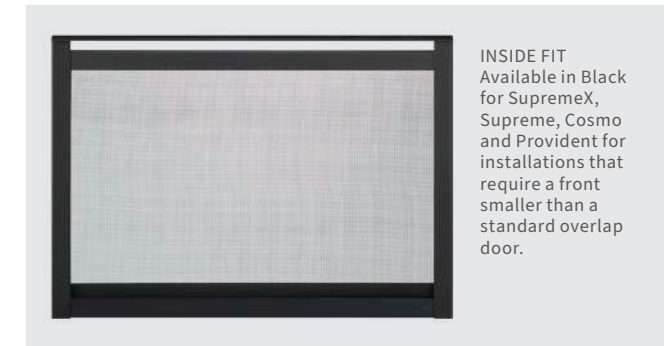


FIRESCREEN
Available in Black, New Bronze or Gun Metal.

PROVIDENT



FIRESCREEN
Available in Black, New Bronze or Gun Metal.



INSIDE FIT
Available in Black for SupremeX, Supreme, Cosmo and Provident for installations that require a front smaller than a standard overlap door.

Surrounds

Hide any gap between your gas fireplace insert and the existing fireplace opening with a low profile metal surround in different finishes. Custom surrounds may be available depending on sizes needed.

SMALL



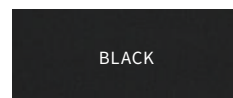
MEDIUM



LARGE



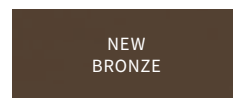
SURROUND COLOR OPTIONS



BLACK



GUN METAL



NEW BRONZE

Controls

Whether it's the IntelliFire® app that lets you start the fire from your phone (even when you're not home), a sleek touchscreen remote that gives you easy access to flame height and fan speed, or a simple wall switch for quick on-off convenience, there's an option that fits your life.

INTELLIFIRE APP



WIRELESS WALL SWITCH



TOUCHSCREEN REMOTE



SMART REMOTE
(compatible with Provident)



Termination Caps

A termination cap is the essential, finishing touch on your fireplace vent. It keeps out rain and debris while ensuring proper and safe airflow.

ROUND CAP



SQUARE CAP
Available in Black or Copper finish



Cosmo 30" with Fluted Black Glass interior panels, Birch logs and Gun Metal Halston Arch front

Technologies

DIRECT VENT TECHNOLOGY

Gas inserts are sealed systems that pull fresh air from outside and send 100% of combustion exhaust back outdoors. That means no fumes enter your home. The result is efficient heating, better energy use and cleaner indoor air quality.

INTELLIFIRE TOUCH® IGNITION SYSTEM (IFT)

IntelliFire Touch is an advanced intermittent pilot ignition (IPI) system that makes starting and controlling your fireplace simple, safe and reliable. Applies to all control types (app, wall switch and touchscreen remote).

INTELLIFIRE IGNITION SYSTEM (IPI)

IntelliFire features intermittent-pilot ignition (IPI) allowing you to conserve fuel and money when the fireplace is not in use.

FADE-RESISTANT BLACK GLASS PANELS

These Black glass interior panels reflect the flames for a richer, more dramatic fire. They're designed to resist fading and discoloration over time, so your fireplace keeps its clean, modern appearance for years to come.

FIREBRICK TECHNOLOGY

Available on Escape inserts, FireBrick is a patented, energy-saving ceramic material molded in an authentic masonry design. FireBrick produces up to 25% more radiant heat than metal fireboxes—heating rooms faster and using less fuel. This increases efficiency and reduces heating costs. A unique ceramic composition is at the core of the FireBrick innovation.

LED EMBER BED

Exclusive technology that outlasts halogen alternatives, adding a realistic glow to your fireplace. It's perfect for creating ambiance year-round, with minimal energy use.

Compare & Measure

Features

PACKAGE	MODEL	WIDTH	BTUs	IGNITION SYSTEM	FRONT DESIGN OPTIONS	LOG OPTIONS	INTERIOR PANELS	FAN	REMOTE CONTROL	THERMOSTAT CONTROL	ADVANCED TECHNOLOGY	LIGHTING
BEST	ESCAPE	30"	36,000	IntelliFire Touch® with optional IntelliFire® app & voice control	5	Oak	Patented FireBrick®	Yes	Touchscreen Remote	Yes	Anti-reflective Glass	Yes
		35"	40,000									
BEST	SUPREMEX	30"	27,000	IntelliFire Touch® with optional IntelliFire® app & voice control	3*	Oak Birch	Black Metal Stratford Brick Herringbone Brick	Yes	Touchscreen Remote	Yes	Elevated Burner & LED Ember Bed	Yes
		35"	32,700									
BETTER	SUPREME	25"	27,000	IntelliFire Touch® with optional IntelliFire® app & voice control	3*	Oak Birch	Black Metal Stratford Brick Herringbone Brick Reflective Black Glass	Yes	Touchscreen Remote	Yes	N/A	Optional
		30"	32,700									
		35"	35,000									
BETTER	COSMO	30"	28,000	IntelliFire Touch® with optional IntelliFire® app & voice control	3*	Driftwood	Fluted Black Glass Reflective Black Glass	Yes	Touchscreen Remote	Yes	N/A	N/A
		35"	30,000									
		30"	30,000									
GOOD	PROVIDENT	30"	30,000	IntelliFire® (IPI) with optional Smart Remote control	1*	Oak	Reflective Black Glass	Optional	Optional	Optional	N/A	N/A
		35"	32,700									

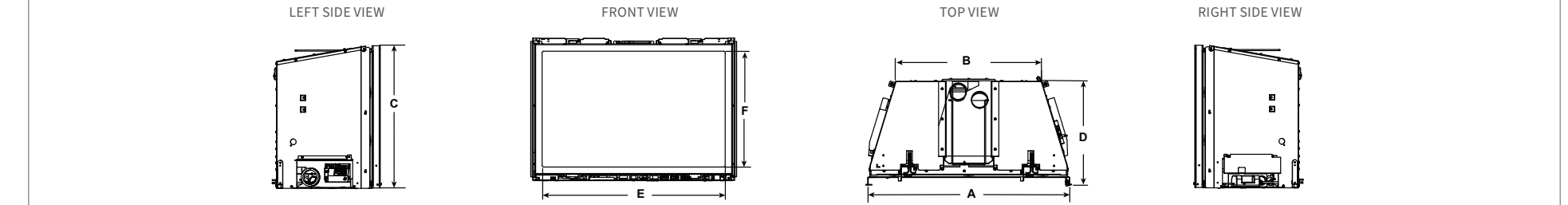
*Inside fit front is available for installations that require a custom surround that is smaller than a standard overlap door.

Efficiencies **EnerGuide (CSA P.4.1-15)** Used in Canada and some US states to measure annual fireplace efficiency.

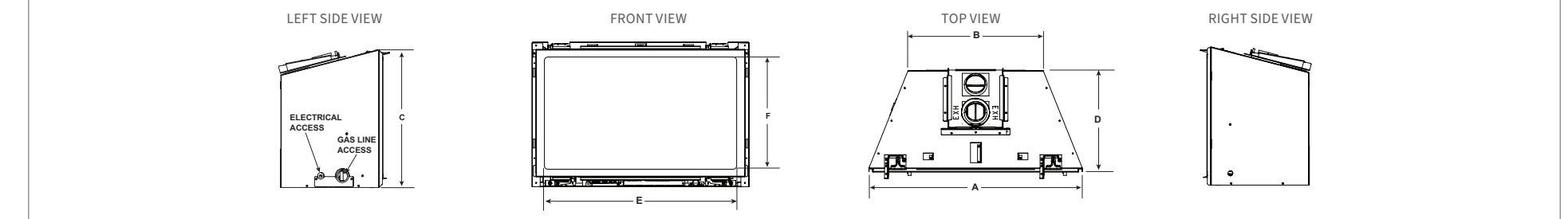
MODEL	RATING	MODEL	RATING	MODEL	RATING	MODEL	RATING	MODEL	RATING	MODEL	RATING
ESCAPE-35-IFT	72.90% (NG), 73.80% (LP)	SUPREMEX-I30 SUPREMEX-I30BIR	68.20% (NG), 65.40% (LP)	SUPREME-I35-IFT SUPREME-I35-BIR	71.61% (NG), 71.20% (LP)	PROVIDENT-I35-IPI	74.80% (NG), 74.40% (LP)	COSMO-I35-IFT	72.01% (NG), 69.20% (LP)		
ESCAPE-30-IFT	70.70% (NG), 71.10% (LP)	SUPREMEX-I35 SUPREMEX-I35BIR	66.40% (NG), 67.50% (LP)	SUPREME-I30-IFT SUPREME-I30-BIR	70.91% (NG), 71.00% (LP)	PROVIDENT-I30-IPI	67.70% (NG), 70.10% (LP)	COSMO-I30-IFT	69.81% (NG), 69.00% (LP)		
				SUPREME-I25-IFT SUPREME-I25-BIR	68.01% (NG), 66.00% (LP)						

Measurements

PACKAGE	MODEL	WIDTH	FRONT WIDTH		BACK WIDTH		HEIGHT		DEPTH		GLASS SIZE	BTU/HOUR INPUT (NG)	CONVECTION BLOWER
			UNIT	MIN. FIREBOX OPENING	UNIT	MIN. FIREBOX OPEN	UNIT	MIN. FIREBOX OPENING	UNIT	MIN. FIREBOX OPENING			
BEST	ESCAPE	30"	30" [762mm]	30-1/2" [775mm]	21" [533mm]	21-1/2" [546mm]	22-3/8" [568mm]	22-5/8" [575mm]	16-3/8" [410mm]	16-5/8" [422mm]	26-11/16" x 17-7/8" [678mm x 454mm]	36,000	120 CFM
		35"	34-5/8" [879mm]	35-1/8" [892mm]	25" [635mm]	25-1/2" [648mm]	24-3/8" [619mm]	24-5/8" [625mm]	17-7/8" [454mm]	18-1/8" [460mm]	31-3/8" x 19-7/8" [797mm x 505mm]	40,000	120 CFM



BEST	SUPREMEX	30"	31-1/8" [791mm]	31-5/8" [511mm]	19-5/8" [499mm]	20-1/8" [511mm]	20-3/4" [527mm]	21" [533mm]	14-1/2" [369mm]	15" [381mm]	27-1/2" X 15-15/16" [699mm X 405mm]	27,000	160 CFM
		35"	36-1/8" [918mm]	36-5/8" [930mm]	24-5/8" [626mm]	25-1/8" [638mm]	24" [610mm]	24-1/4" [616mm]	14-1/2" [368mm]	15" [381mm]	32-1/2" X 19-3/8" [826mm X 492mm]	32,700	160 CFM
BETTER	SUPREME	25"	26-1/8" [664mm]	26-5/8" [676mm]	14-5/8" [372mm]	15-1/8" [384mm]	17-1/16" [433mm]	17-5/16" [439mm]	14-1/2" [368mm]	15" [381mm]	22-1/2" X 12-7/16" [572mm X 316mm]	27,000	160 CFM
		30"	31-1/8" [791mm]	31-5/8" [803mm]	19-5/8" [499mm]	20-1/8" [511mm]	20-3/4" [527mm]	21" [533mm]	14-1/2" [368mm]	15" [381mm]	27-1/2" X 15-15/16" [699mm X 405mm]	32,700	160 CFM
		35"	36-1/8" [918mm]	36-5/8" [930mm]	24-5/8" [626mm]	25-1/8" [638mm]	24" [610mm]	24-1/4" [616mm]	14-1/2" [368mm]	15" [381mm]	32-1/2" X 19-3/8" [826mm X 492mm]	35,000	160 CFM
BETTER	COSMO	30"	31-1/8" [791mm]	31-5/8" [803mm]	19-5/8" [499mm]	20-1/8" [511mm]	20-3/4" [527mm]	21" [533mm]	14-1/2" [368mm]	15" [381mm]	27-1/2" X 15-15/16" [699mm X 405mm]	28,000	160 CFM
		35"	36-1/8" [918mm]	36-5/8" [930mm]	24-5/8" [626mm]	25-1/8" [638mm]	24" [610mm]	24-1/4" [616mm]	14-1/2" [368mm]	15" [381mm]	32-1/2" X 19-3/8" [826mm X 492mm]	30,000	160 CFM
GOOD	PROVIDENT	30"	31-1/8" [791mm]	31-5/8" [803mm]	19-5/8" [499mm]	20-1/8" [511mm]	20-3/4" [527mm]	21" [533mm]	14-1/2" [368mm]	15" [381mm]	27-1/2" X 15-15/16" [699mm X 405mm]	30,000	160 CFM
		35"	36-1/8" [918mm]	36-5/8" [930mm]	24-5/8" [626mm]	25-1/8" [638mm]	24" [610mm]	24-1/4" [616mm]	14-1/2" [368mm]	15" [381mm]	32-1/2" X 19-3/8" [826mm X 492mm]	32,700	160 CFM





SupremeX 30" with Black Metal interior panels,
Oak logs and Black Firescreen front



HNG-1142-0526

OUR SUSTAINABILITY STORY

Our history of leadership in the hearth industry compels us to now lead the way in developing manufacturing practices that ensure our planet remains as durable, beautiful and long-lasting as our products. Find out how we are leading the industry in sustainable practices by scanning the code at right.



heatnglo.com

HEAT & GLO
No one builds a better fire